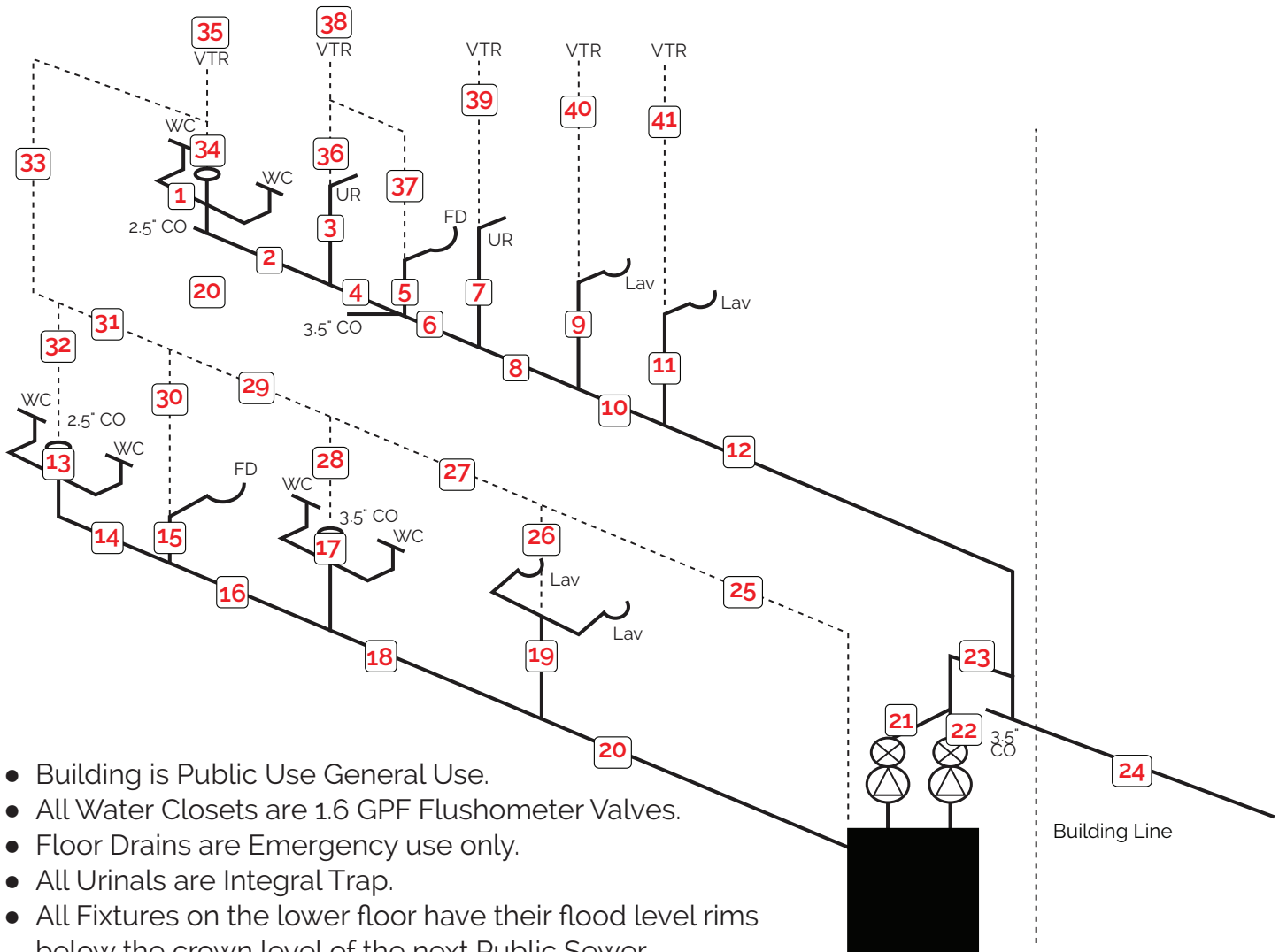


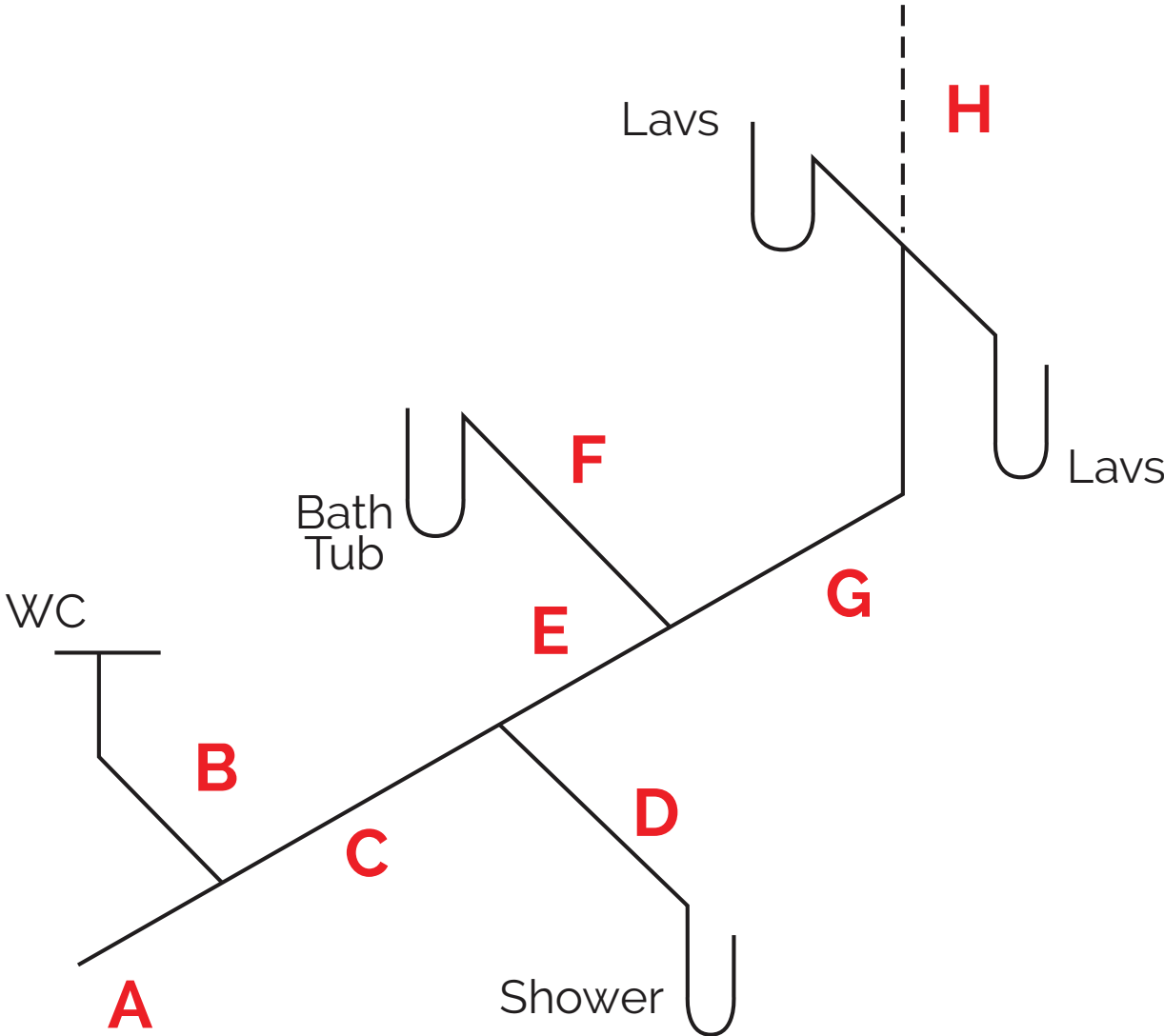
WASTE & VENT SIZING: DRAWING #1



- Building is Public Use General Use.
- All Water Closets are 1.6 GPF Flushometer Valves.
- Floor Drains are Emergency use only.
- All Urinals are Integral Trap.
- All Fixtures on the lower floor have their flood level rims below the crown level of the next Public Sewer.
- Sewage Pumps operate alternately and independently but not simultaneously. Each pump discharges 20 GPM.

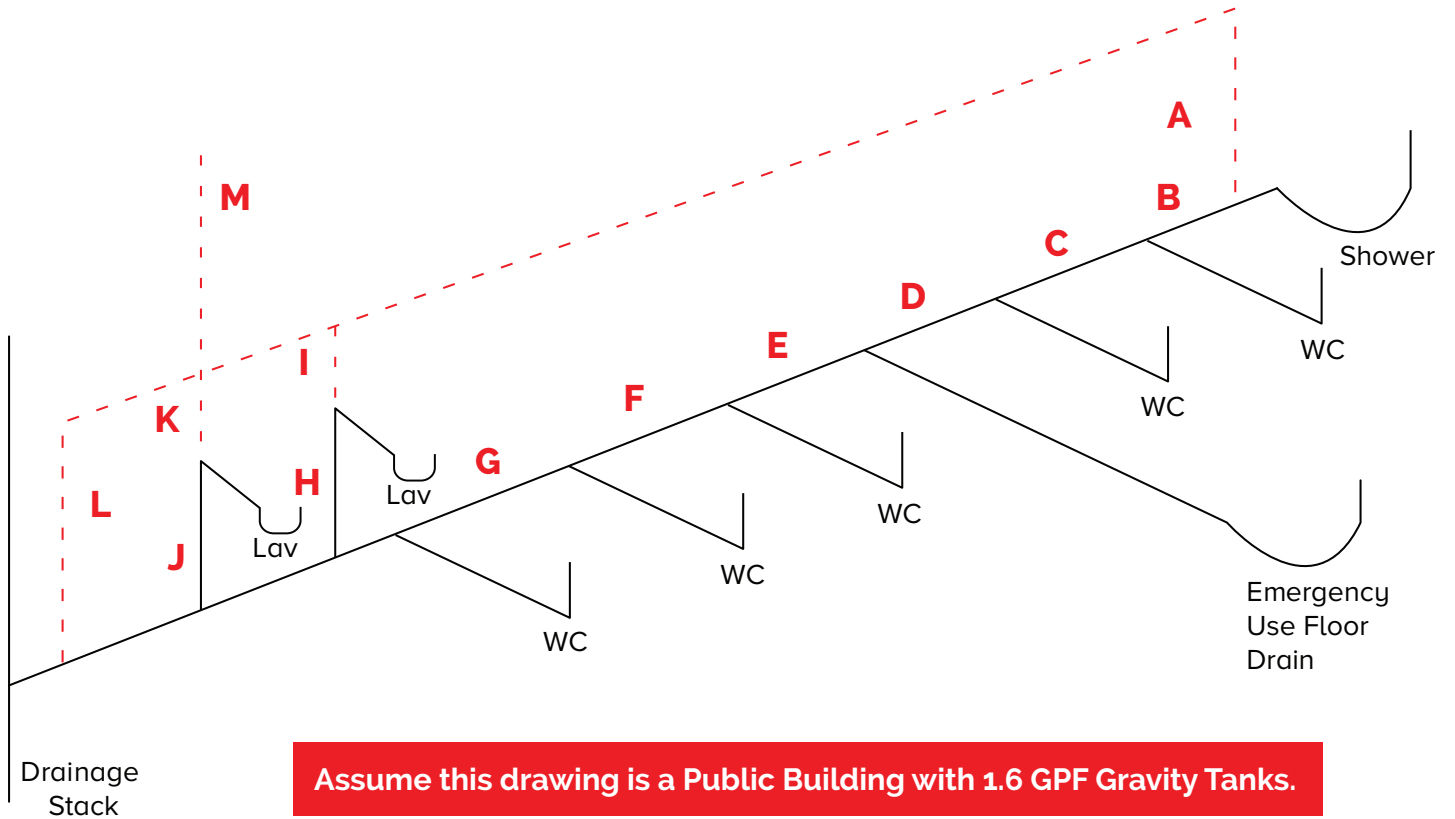
Pipe Section	Fixture Units	Pipe Size	Pipe Section	Fixture Units	Pipe Size	Pipe Section	Fixture Units	Pipe Size	Pipe Section	Fixture Units	Pipe Size
1			13			25			37		
2			14			26			38		
3			15			27			39		
4			16			28			40		
5			17			29			41		
6			18			30					
7			19			31					
8			20			32					
9			21			33					
10			22			34					
11			23			35					
12			24			36					

WASTE & VENT SIZING: DRAWING #2



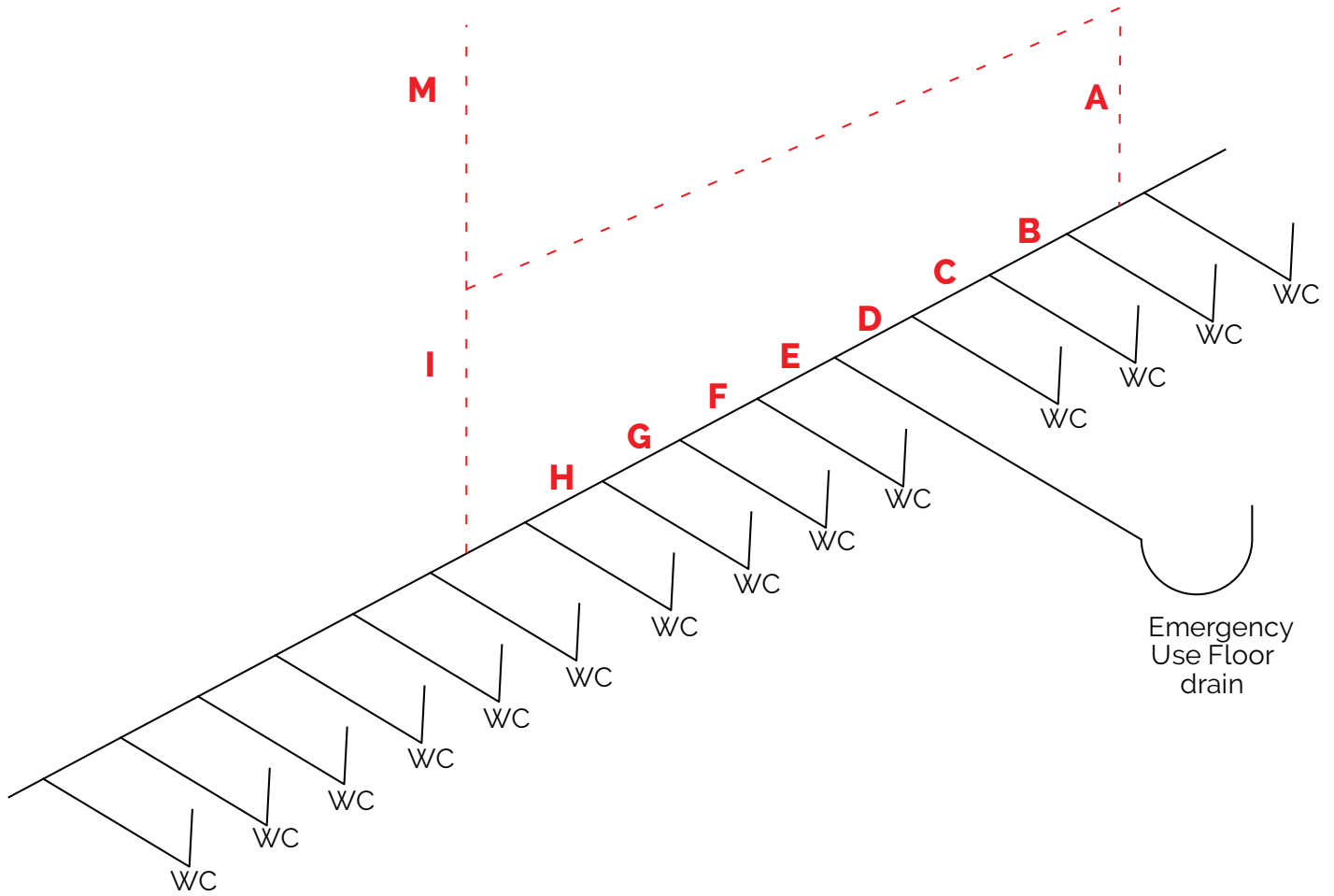
Pipe Section	Pipe Size
A	
B	
C	
D	
E	
F	
G	
H	

WASTE & VENT SIZING: DRAWING #3



Pipe Section	Pipe Size	Pipe Section	Pipe Size
A		H	
B		I	
C		J	
D		K	
E		L	
F		M	
G			

WASTE & VENT SIZING: DRAWING #4



Pipe Section	Fixture Units	Pipe Size	Pipe Section	Fixture Units	Pipe Size
A			H		
B			I		
C			J		
D			K		
E			L		
F			M		
G					